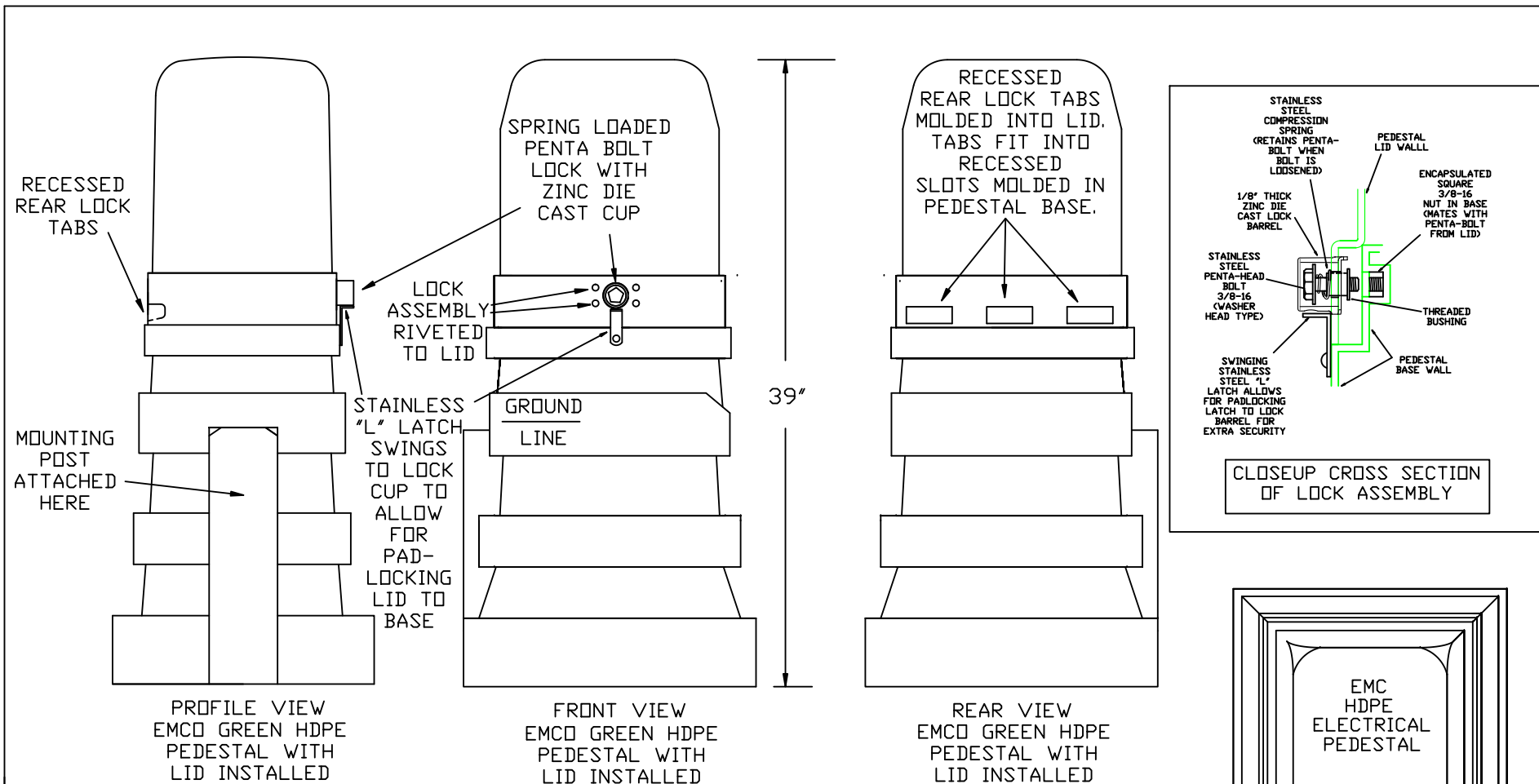


THE INFORMATION CONTAINED IN THIS DRAWING IS THE SOLE PROPERTY OF ELECTRICAL MATERIALS CO. ANY REPRODUCTION OR SHARING WITH A 3RD PARTY IN PART OR WHOLE WITHOUT WRITTEN PERMISSION OF ELECTRICAL MATERIALS CO. IS PROHIBITED.

DRAWN BY: TJD
 DATE: 2/2016
 RVSD: 5/2016
 RVSD: 2/2018
 RVSD: 11/2019
 PAGE: 1 OF 2

**EMC RECTANGULAR POLYETHYLENE PEDESTAL
 WITH FLAT TOP BASE
 EMC CAT# 3914FB**

ELECTRICAL MATERIALS CO.
 PRODUCTS FOR THE UTILITY INDUSTRY
 145 ELIZABETH LANE
 GENOA CITY, WI 53128
 (262) 279-3812
 EMAIL: EMC@ELECTRICALMATERIALSCOMPANY.COM
 WWW.ELECTRICALMATERIALSCOMPANY.COM



THE INFORMATION CONTAINED IN THIS DRAWING IS THE SOLE PROPERTY OF ELECTRICAL MATERIALS CO. ANY REPRODUCTION OR SHARING WITH A 3RD PARTY IN PART OR WHOLE WITHOUT WRITTEN PERMISSION OF ELECTRICAL MATERIALS CO. IS PROHIBITED.

DRAWN BY: TJD
DATE: 2/2016
RVSD: 5/2016
RVSD: 2/2018
RVSD: 11/2019
PAGE: 2 OF 2

**EMC RECTANGULAR POLYETHYLENE PEDESTAL
WITH FLAT BASE
EMC CAT# 3914FB**

ELECTRICAL MATERIALS CO.
PRODUCTS FOR THE UTILITY INDUSTRY
145 ELIZABETH LANE
GENEA CITY, WI 53128
(262) 279-3812
EMAIL: EMC@ELECTRICALMATERIALSCOMPANY.COM
WWW.ELECTRICALMATERIALSCOMPANY.COM